



Based on ICODES Terminal Management Module

### ADVANCED TERMINAL MANAGEMENT

GOLDesp Terminal Manager provides total asset visibility, relaying positional feeds of tracked assets arriving and moving through the terminal

Effectively collaborate across multiple locations

# GOLDesp Terminal Manager

## Complex Terminal Operations Simplified

### TERMINAL MANAGEMENT WITH INTEGRATED FUTURE AND CURRENT OPERATIONS MONITORING

GOLDesp Terminal Manager optimizes logistics operations for the day-to-day management of transportation terminals, helping decision-makers derive more accurate predictions for current and future yard plans and cargo transfers.

GOLDesp Terminal Manager provides total asset visibility by receiving and relaying the positional feeds of tracked assets as they arrive and move through the terminal.

By integrating the entire operational time frame in one accessible interface, GOLDesp Terminal Manager allows operators to review past locations and movement of cargo, monitor and manage operations in the present, and schedule future yard plans and cargo transfers.

This high level of visibility allows users

to gather statistics from past operations and derive more accurate predictions for current and future proposed plans.

Intelligent software agents assist operators by monitoring planning and execution processes in near-real time and issuing alerts of inconsistencies between the operational plan and actual execution.

The integration of past, present, and future activities with web-based enterprise technologies makes GOLDesp Terminal Manager a powerful, informative, and useful tool for providing an overall picture of operations to the key players of terminal management.

The solution leverages our technology developed for the Integrated Computerized Deployment System (ICODES), which provides multi-modal load planning capabilities to the U.S. Department of Defense.

## BENEFITS

- Collaborative capabilities
- Increased awareness and organization
- Improved decision-making
- Real-time tracking via hand-held scanners
- Dynamic, detailed, customizable reports and documentation

## EFFECTIVE COLLABORATION

GOLDesp Terminal Manager's collaborative capabilities enable varying functional groups at a terminal to access the operational timeframe and easily communicate, coordinate, and collaborate on different activities through a single integrated interface.

Though they may be positioned in different locations, all necessary groups — from receivers and movers to logistics managers and analysts — can view past, present and future operations.

While operational information is shared, each group maintains complete control over group-specific processes, resulting

in expertly executed operations and streamlined coordination between groups as tasks are completed.

## COMPLETE AWARENESS OF OPERATIONS

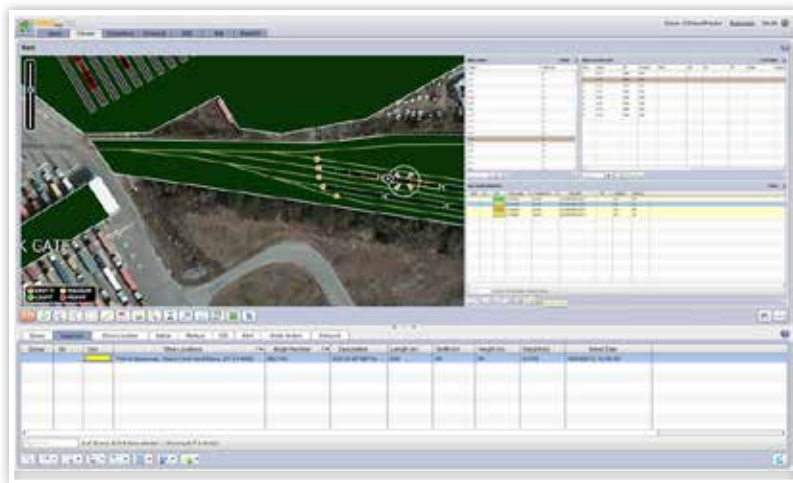
Organizations can leverage information collected by GOLDesp Terminal Manager to generate customizable reports, schedules and other supporting documents utilized by various terminal groups. Business Intelligence (BI) capabilities grant organizations a complete view of operations to make informed executive decisions.

GOLDesp Terminal Manager's agent alerts enable operators to easily identify and correct errors. Alerts are issued when items are placed in hazardous locations, Net Explosive Weight (NEW) exceeds the limits of the current location, and cargo items are not compatible for transport on the same conveyance. GOLDesp Terminal Manager also sends alerts when discrepancies between planned and actual cargo locations arise.



## Real-time tracking via handheld scanners

ORGANIZATIONS DERIVE MORE ACCURATE PREDICTIONS FOR CURRENT AND FUTURE PLANS



Tapestry Solutions  
Offices in USA, UK, Saudi Arabia, Oman, India  
t +1.858.503.1990  
marketing@tapestrysolutions.com

**TAPESTRY  
SOLUTIONS**  
A BOEING COMPANY