

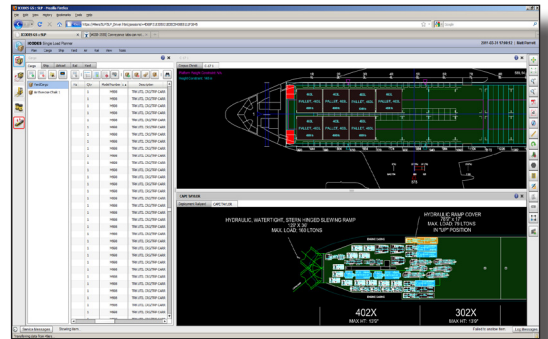


# ICODES

## INTEGRATED COMPUTERIZED DEPLOYMENT SYSTEM

### AGENT-BASED TECHNOLOGY FOR LOAD PLANNING OPERATIONS

ICODES integrates multi-agent architecture with expert load planning knowledge to assist decision-makers in creating effective load plans.



ICODES SLP Ship and Air Load Planning

### HIGHLIGHTS

- Load planning for ships, aircraft, railcars, and yards
- Load estimation for pallets, containers, trucks, and trailers
- Agent alerts that notify users of warnings or violations in a load plan or estimation
- Real-time tracking via AIT scanners
- Representation of conveyance and cargo reference data

The Integrated Computerized Deployment System (ICODES) is a load planning software tool that assists embarkation specialists in the rapid development of cargo load plans. Serving as the Single Load Planning Capability (SLPC) for the Department of Defense, ICODES links load planners throughout the enterprise with each other and authoritative data sources for near real-time collaboration in support of Joint Forces deployment and distribution operations. ICODES provides end-to-end supply chain

visibility through increased in-transit cargo visibility, distribution forecasting and planning, and information visualization.

ICODES aims to increase the efficiency of military transportation planning performance by incorporating expert computer agents that offer technical solutions to complex problems. These agents collaborate with the human user by monitoring various stages of the load planning process and suggesting solutions to problems as they arise.

